

AGM GLOBAL VISION



- THERMAL IMAGING
 - DIGITAL DAY & NIGHT OPTICS
- FUSION IMAGING
 - NIGHT VISION

PRODUCT CATALOG

TABLE OF CONTENTS

ABOUT AGM GLOBAL VISION	3
THERMAL MONOCULARS	
ASP-MICRO	5
TAIPAN	6
SIDEWINDER	7
StingIR	8
THERMAL RIFLE SCOPES	
RATTLER TS	9
ADDER	10
VARMINT LRF	11
THERMAL CLIP-ONS	
RATTLER TC	12
SPECIFICATIONS - THERMAL IMAGING	13
DIGITAL DAY & NIGHT VISION RIFLE SCOPES	
SPECTRUM-IR	17
NEITH DS	18
DIGITAL DAY & NIGHT VISION CLIP-ONS	
NEITH DC	19
SPECIFICATIONS - DIGITAL DAY & NIGHT OPTICS	20
FUSION MONOCULARS	
FUZION LRF	22
F14	23

FUSION BINOCULARS	
VOYAGE	24
SPECIFICATIONS - FUSION IMAGING	25
NIGHT VISION MONOCULARS	
WOLF-14	27
PVS-14	28
NIGHT VISION GOGGLES	
WOLF-7 PRO	29
PVS-7	30
NVG-40, NVG-50	31
NIGHT VISION BINOCULARS	
FOXBAT	32
NIGHT VISION RIFLE SCOPES	
WOLVERINE-4	33
WOLVERINE PRO	34
NIGHT VISION CLIP-ONS	
COMANCHE-22	35
COMANCHE-40ER	36
SPECIFICATIONS - NIGHT VISION	37
IMAGE INTENSIFIER TUBES	
GEN 2+ IIT, GEN 3 IIT	38

EXPORT INFORMATION

Equipment described herein may require US Government authorization for export purposes. Diversion contrary to US law is prohibited.

Images are for illustration purposes only. Specifications are subject to change without notice, check our website www.agmglobalvision.com



ABOUT AGM GLOBAL VISION

Based in Springerville Arizona, USA – AGM Global Vision designs, develops, and distributes a wide range of professional-grade night vision and thermal devices including rifle scopes, clip-on systems, spotting scopes, binoculars, monoculars, goggles, multispectral lasers, infrared illumination devices, and more.

The founders of AGM Global Vision (Allen Harding, Gary Tarakanov, and Mark Tarakanov) have a strong, well-established track record of creating industry leading companies within the electro-optics industry along with a formidable history of creating and developing highly recognized brands within the optics market segment. After spending time collaborating as a systems manufacturer to a number of key players in the field, the founders of AGM Global Vision decided that it was time to debut a new company that willfully aligns itself with a greater worldwide vision and marketing strategy that is bigger and bolder than most.

AGM Global Vision is on the way to becoming a unique standout within the industry by developing cutting edge products that exceed client expectations. As part of its diversified strategic plan, AGM Global Vision continues to support and develop its thriving OEM branding and product assembly services for its valued partners and customers.





THERMAL IMAGING

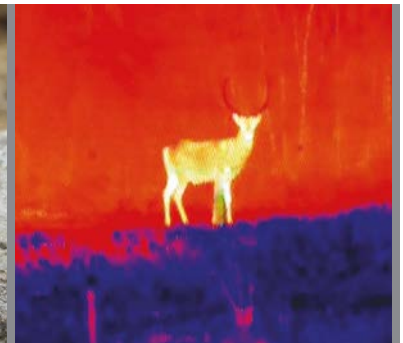
- MONOCULARS
- RIFLE SCOPES
- CLIP-ON SYSTEMS



ASP-MICRO THERMAL IMAGING MONOCULAR

The Asp-Micro handheld observational thermal monocular is equipped with a 160x120 infrared detector and a 720x540 LCOS display. It supports functions of observation, highest-temperature target tracking, distance measurement, Wi-Fi hotspot, and more. The high-sensitivity built-in thermal detector provides a clear view even in total darkness. The monocular is mainly used in scenarios such as patrolling, law enforcement, search-and-rescue, drug enforcement, anti-smuggling, hiking, and hunting.

- 160x120 resolution infrared detector
- Adaptive AGC, DDE, 3D DNR
- Built-in memory supports video recording and image capture
- Wi-Fi hotspot
- Distance measurement
- Highest temperature tracking
- 720x540 resolution LCOS display
- Built-in rechargeable Lithium battery
- Up to 10 hours continuous running (with Wi-Fi hotspot function off)
- USB-C interface
- 3-year warranty





TAIPAN THERMAL IMAGING MONOCULAR

The Taipan™ handheld thermal monocular is equipped with a 12μm infrared detector and a high-resolution display. It supports functions of observation, highest temperature target tracking, distance measurement, Wi-Fi hotspot, and more.

The high-sensitivity built-in thermal detector provides a clear view even in total darkness. The monocular is mainly used in scenarios such as patrolling, law enforcement, search-and-rescue, drug enforcement, anti-smuggling, hiking, and hunting.

- 12μm high-sensitivity detector
- 256×192 or 384×288 resolution
- Adaptive AGC, DDE, 3D DNR
- High-resolution LCOS display
- Distance measurement function
- The device detects and marks the hot spot of highest temperature
- A wide variety of color palettes
- Built-in memory supports video recording and image capture
- 1x, 2x, 4x and 8x digital zoom
- Picture-in-Picture mode
- Wi-Fi hotspot
- Device can capture images, record videos, and set parameters via APP after being connected to your phone
- Built-in rechargeable Li-Ion battery
- More than 7.5 hours continuous running
- USB-C interface
- 3-year warranty





SIDEWINDER THERMAL IMAGING MONOCULAR

The Sidewinder™ is our premium handheld observational thermal monocular series. All models come equipped with either a 384×288 or 640×512 twelve micron infrared detector and a 1024×768 OLED display, for improved color rendering. The Sidewinder thermal sensors also come equipped with the most sensitive temperature ratings in its class, coming in at sub-20 millikelvin across the entire product family. Other improvements over the Taipan monoculars include a more robust body/housing and a removable, rechargeable 18650 battery. These units also boast an impressive waterproof rating, which ensures users have peace of mind while utilizing these under the vast majority of weather conditions.

The Sidewinders built-in 64 GB memory also sits at the top of its class on the market, with advanced software supporting both video recording and image capture. The primary uses for these thermal monoculars include, but are not limited to: hunting, law enforcement, search-and-rescue, personal security, conservation, anti-poaching, camping, hiking and different marine applications.

- 12μm, 384×288 or 640×512 resolution detector
- Highest thermal sensitivity (NETD <20mK)
- Advanced image processing (Digital Detail Enhancement, digital Noise Reduction and NLM algorithm)
- 50 Hz image frame rate
- 1024×768 resolution OLED display
- Built-in memory supports video/audio recording and image capture
- Wi-Fi hotspot
- Distance measurement function
- Highest temperature tracking
- A wide variety of color palettes
- 1x, 2x, 4x and 8x digital zoom
- Replaceable and rechargeable Li-Ion battery
- Up to 7 hours continuous running
- 5-year warranty





StingIR THERMAL IMAGING MONOCULAR

The StingIR™ miniature observational thermal monocular is equipped with a 384x288 or 640x480 12µm high-sensitivity infrared detector and a high-resolution OLED display. The StingIR is a full-featured unit, weighing less than 7 ounces/200 grams. The monocular can be helmet mounted for hands-free operations, or used as a standalone handheld device. The StingIR can also be used as a stand-alone thermal scope, or thermal clip-on, making it one of our most versatile offerings.

Other features include a digital compass, inclinometer, up to 8x digital zoom and the ability to be powered by two types of replaceable CR123 or 18650 batteries. The high-sensitivity built-in thermal detector provides you with a clear view in any lighting condition.

- 12µm high-sensitivity detector
- 384x288 or 640x480 resolution
- Head or helmet-mountable for hands-free usage
- Compact, and sturdy design
- High-resolution OLED display
- Multiple thermal image palettes
- Device supports up to 8x digital zoom
- Powered by a single CR123A, RCR123 or 18650 Lithium battery
- Up to 5 hours continuous running
- Digital compass and inclinometer
- Type-C interface
- 5-year warranty





RATTLER TS THERMAL IMAGING RIFLE SCOPE

The Rattler thermal scope series are compact designs developed for 24 hours operation under any weather and environmental conditions. A wide selection of different lenses and thermal detector resolutions allow the customer to select the ideal instrument for tasks at different distances.

The Rattler series scopes use a high-sensitivity thermal detector and 1024x768 OLED monitor, which provides a clear image under harsh environment conditions like darkness, fog, smoke, dust, rain, snow, wood, camouflage, etc.

Powered with two CR123 batteries the AGM Rattler TS provides up to 4.5 hours of continuous operation. An external 5V power bank (battery pack) can be easily connected via a USB-C connector for a significant increase of operating time. Onboard Wi-Fi module is also available for live video streaming and video/images recording via mobile application.

- High-sensitivity detector
- Lightweight and compact design
- Electronic zero correction
- Automatic or manual (silent) calibration
- High-resolution 1024x768 OLED display
- Waterproof and shockproof
- 1x, 2x, 4x and 8x digital zoom
- Picture-in-Picture mode
- Stadiametric rangefinder
- Video recording and image capture
- Built-in 16 GB EMMC memory module
- Wi-Fi data transmission
- Powered by two standard CR123A batteries
- Up to 4.5 hours continuous working
- External power supply capability
- Video output for external monitor or recorder
- 5-year warranty





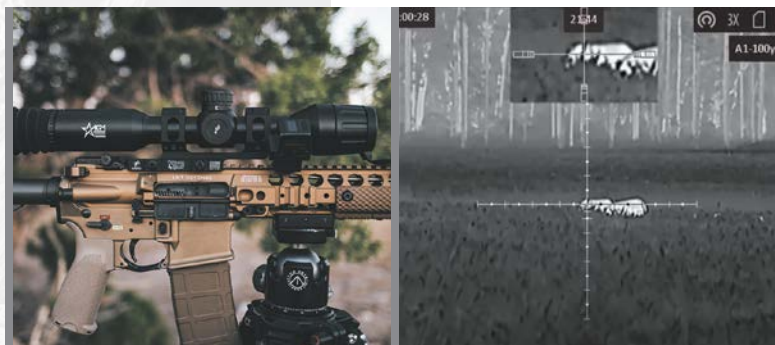
ADDER THERMAL IMAGING RIFLE SCOPE

The Adder thermal imaging scope was developed for hunters who prefer a traditional scope body. The Adder comes with a 30mm American Defense Manufacturing (ADM) AD Recon scope mount – but can be mounted to the weapon using any standard 30mm scope rings. The traditional body style meets the needs of professional hunters who value traditions and seek technological superiority, ensure an extreme detection range of up to 2600 meters.

The scope is equipped with unique dual power system. Two built-in 18650 rechargeable batteries with one CR123A replaceable Lithium battery provide up to 15 hours of continuous operation. The device has fast 64GB EMMC storage for on-board video recording and image capture. Shot Activated Recording (SAR) function allows you not to worry about having to start recording manually each time. Comes standard with video and audio recording and onboard Wi-Fi module for live video streaming and video/image recording via mobile applications.

Riflescope has 384×288 or 640×512 high-sensitivity thermal detector and 1024×768 OLED monitor, which provides clear image under harsh environment conditions like darkness, fog, smoke, dust, rain, snow, wood, camouflage, etc.

- 384×288 or 640×512 thermal resolution
- 12μm high-sensitivity detector
- Fast 50 Hz imaging
- High-resolution OLED display
- 1x, 2x, 4x, 8x digital zoom
- On-board video and audio recording
- Shot Activated Recording (SAR)
- Wi-Fi data transmission
- Fast 64GB EMMC built-in storage
- Various reticle types and colors
- Standby mode
- Waterproof & Shockproof
- Dual power system
- Up to 15 hours continuous working
- 5-year warranty





VARMINT LRF THERMAL IMAGING RIFLE SCOPE

The Varmint LRF is a compact thermal imaging scope with built-in precision laser rangefinder. Equipped with a highly sensitive, 12 μ m thermal detector and 1024x768 OLED monitor, the AGM Varmint LRF provides a clear image under harsh environmental conditions including darkness, fog, smoke, dust, rain, snow, brush, camouflage, etc. The Varmint LRF's user-friendly interface, comfortable and ergonomic operating controls makes its use incredibly easy.

The built-in laser range finder of the AGM Varmint LRF is designed to determine the exact distance between the observer and the target. Measurement results are displayed in the scopes monitor. One 18650 rechargeable battery gives the device up to 4.5 hours of continuous operation time. An external 5V power bank (battery pack) can be easily connected via a USB to USB-C connector for a significant increase of operating time. The device is equipped with fast EMMC storage for on-board video recording and image capture. Onboard Wi-Fi module allows live video streaming and video/image recording via mobile applications.

- 12 μ m high-sensitivity thermal detector
- Fast 50 Hz imaging
- 1x, 2x, 4x, 8x Digital zoom
- Adjustable color palettes
- Built-in precision eye-safe laser rangefinder
- High resolution OLED display
- Various reticle types and colors
- Picture-in-Picture mode
- On-board video recording and image capture
- Built-in EMMC storage (16 GB)
- Wi-Fi data transmission
- Standby mode
- Up to 4.5 hours continuous runtime
- External power supply compatibility
- Waterproof & shockproof
- 5-year warranty





RATTLER TC THERMAL IMAGING CLIP-ON

The Rattler TC is a compact thermal imaging clip-on system that allows quick transformation of the day optics into thermal imaging device without any special tools or equipment.

Rattler TC has a high-sensitivity thermal detector and 1024x768 OLED monitor, which provides a clear image under harsh environmental conditions like darkness, fog, smoke, dust, rain, snow, wood, camouflage, etc. The product is mainly applied to scenarios such as patrolling, hunting, overwatch, etc. The Rattler TC can easily be attached in front of rifle scopes with magnification up to 8x for medium range use.

Powered with two CR123 batteries the AGM Rattler TC gives up to 4.5 hours of continuous operation time. The device is equipped with 16 GB storage for on-board video recording and image capture. Onboard Wi-Fi module is also available for live video streaming and video/images recording via mobile application.

- Quick conversion of daytime optics into thermal imaging scope
- Mounts in front of any daytime scope, no re-zeroing is required
- Lightweight and compact design
- High-sensitivity thermal detector
- Automatic or manual (silent) calibration
- Adjustable color palettes
- Supports distance measurement
- High-resolution OLED display
- Wi-Fi data transmission
- Video recording and image capture
- Built-in 16 GB EMMC memory module
- Waterproof, shockproof
- Powered by two standard CR123A batteries
- Up to 4.5 hours continuous working
- External power supply capability via USB-C interface
- 5-year warranty





SPECIFICATIONS THERMAL IMAGING

THERMAL IMAGING MONOCULARS

	Asp-Micro TM160	Taipan TM10-256	Taipan TM15-256	Taipan TM15-384	Taipan TM19-384	Taipan TM25-384
Detector	17µm Uncooled Microbolometer	12µm Uncooled Microbolometer	12µm Uncooled Microbolometer	12µm Uncooled Microbolometer	12µm Uncooled Microbolometer	12µm Uncooled Microbolometer
Resolution	160x120	256x192	256x192	384x288	384x288	384x288
Refresh Rate	25 Hz	25 Hz	25 Hz	50 Hz	50 Hz	50 Hz
Detection Range (6' object)	250 m/yd	410 m/yd	710 m/yd	710 m/yd	900 m/yd	1,180 m/yd
Lens System	6.2 mm; F/1.1	10 mm; F/1.0	15 mm; F/1.0	15 mm; F/1.0	19 mm; F/1.0	25 mm; F/1.0
Magnification	0.5x -2x	1x - 8x	1.5x - 12x	1.5x - 12x	2x - 16x	2.5x - 20x
Field of View	24.7° x 18.7°	18.0° x 13.65°	11.7° x 8.8°	17.5° x 13.1°	13.8° x 10.4°	10.5° x 7.9°
Digital Zoom	1x, 2x, 4x	1x, 2x, 4x, 8x	1x, 2x, 4x, 8x	1x, 2x, 4x, 8x, PIP	1x, 2x, 4x, 8x, PIP	1x, 2x, 4x, 8x, PIP
Weight	0.25 kg (0.55 lb)	0.26 kg (0.57 lb)	0.28 kg (0.62 lb)	0.29 kg (0.64 lb)	0.31 kg (0.68 lb)	0.30 kg (0.66 lb)
Dimensions	161 x 61 x 57 mm (6.3 x 2.4 x 2.2 in)	158 x 61 x 57 mm (6.23 x 2.4 x 2.2 in)	158 x 61 x 57 mm (6.23 x 2.4 x 2.2 in)	158 x 61 x 57 mm (6.2 x 2.4 x 2.2 in)	171 x 61 x 57 mm (6.7 x 2.4 x 2.2 in)	171 x 61 x 57 mm (6.7 x 2.4 x 2.2 in)

THERMAL IMAGING MONOCULARS

	Sidewinder TM25-384	Sidewinder TM35-384	Sidewinder TM35-640	Sidewinder TM50-640	StingIR-384	StingIR-640
Detector	12µm Uncooled Microbolometer	12µm Uncooled Microbolometer	12µm Uncooled Microbolometer	12µm Uncooled Microbolometer	12µm Uncooled Microbolometer	12µm Uncooled Microbolometer
Resolution	384x288	384x288	640x512	640x512	384x288	640x480
Refresh Rate	50 Hz	50 Hz	50 Hz	50 Hz	50 Hz	50 Hz
Detection Range (6' object)	1,250 m/yd	1,800 m/yd	1,800 m/yd	2,600 m/yd	730 m/yd	1,200 m/yd
Lens System	25 mm; F/1.0	35 mm; F/1.0	35 mm; F/1.0	50 mm; F/0.9	16 mm; F/1.3	27 mm; F/1.1
Magnification	2x - 16x	3x - 24x	2x - 16x	2.5x - 20x	1x - 4x	1x - 8x
Field of View	10.5° x 7.9°	7.5° x 5.6°	12.5° x 10°	8.7° x 7°	16.3° x 12.3°	16.3° x 12.3°
Digital Zoom	1x, 2x, 4x, 8x	1x, 2x, 4x, 8x	1x, 2x, 4x, 8x	1x, 2x, 4x, 8x	1x, 2x, 4x	1x, 2x, 4x, 8x
Weight	0.50 kg (1.1 lb)	0.51 g (1.11 lb)	0.51 g (1.11 lb)	0.64 kg (1.4 lb)	0.20 kg (0.44 lb)	0.22 kg (0.48 lb)
Dimensions	188 x 58 x 65 mm (7.4 x 2.3 x 2.6 in)	188 x 58 x 65 mm (7.4 x 2.3 x 2.6 in)	188 x 58 x 65 mm (7.4 x 2.3 x 2.6 in)	200 x 78 x 68 mm (7.9 x 3.0 x 2.7 in)	90 x 41x 67 mm (5.5 x 1.6 x 2.6 in)	90 x 41x 67 mm (5.5 x 1.6 x 2.6 in)

THERMAL IMAGING RIFLE SCOPES

	Rattler TS19-256	Rattler TS25-256	Rattler TS25-384	Rattler TS35-384	Rattler TS35-640	Rattler TS50-640
Detector	12µm Uncooled Microbolometer	12µm Uncooled Microbolometer	17µm Uncooled Microbolometer	17µm Uncooled Microbolometer	12µm Uncooled Microbolometer	12µm Uncooled Microbolometer
Resolution	256x192	256x192	384x288	384x288	640x512	640x512
Refresh Rate	25 Hz	25 Hz	50 Hz	50 Hz	50 Hz	50 Hz
Detection Range (6' object)	950 m/yd	1,250 m/yd	880 m/yd	1,235 m/yd	1,750 m/yd	2,500 m/yd
Lens System	19 mm; F/1.0	25 mm; F/1.0	25 mm; F/1.0	35 mm; F/1.0	35 mm; F/1.0	50 mm; F/1.0
Magnification	2.5x - 20x	3.5x - 28x	1.5x - 12x	2x - 16x	2x - 16x	2.5x - 20x
Field of View	9.3° x 6.9°	7.0° x 5.3°	14.9° x 11.2°	10.0° x 8.0°	12.5° x 10.0°	8.8° x 7.0°
Digital Zoom	1x, 2x, 4x, 8x, PIP	1x, 2x, 4x, 8x, PIP	1x, 2x, 4x, 8x, PIP	1x, 2x, 4x, 8x, PIP	1x, 2x, 4x, 8x, PIP	1x, 2x, 4x, 8x, PIP
Weight	0.52 kg (1.15 lb)	0.53 kg (1.16 lb)	0.5 kg (1.1 lb)	0.51 kg (1.13 lb)	0.54 kg (1.18 lb)	0.61 kg (1.33 lb)
Dimensions	187 x 63 x 80 mm (7.4 x 2.5 x 3.1 in)	187 x 63 x 80 mm (7.4 x 2.5 x 3.1 in)	187 x 63 x 80 mm (7.4 x 2.5 x 3.1 in)	187 x 63 x 80 mm (7.4 x 2.5 x 3.1 in)	187x 63 x 80 mm (7.4 x 2.5 x 3.1 in)	200 x 73 x 84 mm (7.8 x 2.9 x 3.3 in)

THERMAL IMAGING RIFLE SCOPES

	Adder TS35-384	Adder TS50-384	Adder TS35-640	Adder TS50-640
Detector	12µm Uncooled Microbolometer	12µm Uncooled Microbolometer	12µm Uncooled Microbolometer	12µm Uncooled Microbolometer
Resolution	384x288	384x288	640x512	640x512
Refresh Rate	50 Hz	50 Hz	50 Hz	50 Hz
Detection Range (6' object)	1,800 m/yd	2,600 m/yd	1,800 m/yd	2,600 m/yd
Lens System	35 mm; F/1.0	50 mm; F/1.0	35 mm; F/1.0	50 mm; F/1.0
Magnification	3x - 24x	4x - 32x	2x - 16x	2.5x - 20x
Field of View	7.5° x 5.6°	5.2° x 3.9°	12.3° x 9.9°	8.7° x 7.0°
Digital Zoom	1x, 2x, 4x, 8x, PIP	1x, 2x, 4x, 8x, PIP	1x, 2x, 4x, 8x, PIP	1x, 2x, 4x, 8x, PIP
Weight	0.89 kg (1.96 lb)	0.97 kg (2.14 lb)	0.89 kg (1.96 lb)	0.97 kg (2.14 lb)
Dimensions	407 x 78x 76 mm (16.0 x 3.1 x 3.0 in)	420 x 78 x 82 mm (16.5 x 3.1 x 3.2 in)	407 x 78x 76 mm (16.0 x 3.1 x 3.0 in)	420 x 78 x 82 mm (16.5 x 3.1 x 3.2 in)

THERMAL IMAGING RIFLE SCOPES WITH LASER RANGEFINDER

	Varmint LRF TS35-384	Varmint LRF TS50-384	Varmint LRF TS35-640	Varmint LRF TS50-640
Detector	12µm Uncooled Microbolometer	12µm Uncooled Microbolometer	12µm Uncooled Microbolometer	12µm Uncooled Microbolometer
Resolution	384x288	384x288	640x512	640x512
Refresh Rate	50Hz	50Hz	50Hz	50Hz
Detection Range (6' object)	1,750 m/yd	2,500 m/yd	1,750 m/yd	2,500 m/yd
Lens System	35 mm; F/1.0	50 mm; F/1.0	35 mm; F/1.0	50 mm; F/1.0
Magnification	3x - 24x	4x - 32x	2x - 16x	2.5x - 20x
Field of View	7.5° x 5.6°	5.3° x 4.0°	12.5° x 10.0°	8.8° x 7.0°
Digital Zoom	1x, 2x, 4x, 8x, PIP	1x, 2x, 4x, 8x, PIP	1x, 2x, 4x, 8x, PIP	1x, 2x, 4x, 8x, PIP
Laser Rangefinder	Up to 600 m, ±1 m	Up to 600 m, ±1 m	Up to 600 m, ±1 m	Up to 600 m, ±1 m
Weight	0.65 kg (1.44 lb)	0.72 kg (1.59 lb)	0.65 kg (1.44 lb)	0.72 kg (1.59 lb)
Dimensions	200 x 66 x 109 mm (7.8 x 2.6 x 4.3 in)	210 x 74 x 109 mm (8.3 x 2.9 x 4.3 in)	200 x 66 x 109 mm (7.8 x 2.6 x 4.3 in)	210 x 74 x 109 mm (8.3 x 2.9 x 4.3 in)

THERMAL IMAGING CLIP-ONS

	Rattler TC19-256	Rattler TC35-384	Rattler TC35-640	Rattler TC50-640
Detector	12µm Uncooled Microbolometer	17µm Uncooled Microbolometer	12µm Uncooled Microbolometer	12µm Uncooled Microbolometer
Resolution	256x192	384x288	640x512	640x512
Refresh Rate	25 Hz	50 Hz	50 Hz	50 Hz
Detection Range (6' object)	950 m/yd	1,235 m/yd	1,750 m/yd	2,500 m/yd
Lens System	19 mm; F/1.0	35 mm; F/1.0	35 mm; F/1.0	50 mm; F/1.0
Magnification	1x	1x	1x	1x
Field of View	9.2° x 6.9°	10.0° x 8.0°	12.5° x 10.0°	8.8° x 7.0°
Weight	0.41 kg (0.92 lb)	0.42 kg (0.93 lb)	0.42 kg (0.93 lb)	0.49 kg (1.08 lb)
Dimensions	153 x 62 x 59 mm (6.0 x 2.4 x 2.3 in)	153 x 62 x 59 mm (6.0 x 2.4 x 2.3 in)	153 x 62 x 59 mm (6.0 x 2.4 x 2.3 in)	153 x 78 x 66 mm (6.0 x 3.1 x 2.6 in)

DIGITAL DAY & NIGHT OPTICS



- RIFLE SCOPES
- CLIP-ON SYSTEMS



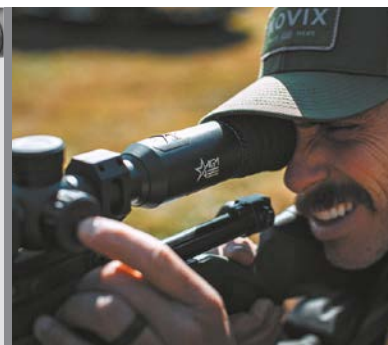
SPECTRUM-IR DIGITAL DAY & NIGHT VISION RIFLE SCOPE

The Spectrum-IR is the digital day & night vision scope developed for 24 hours operation in all ambient light. The Spectrum-IR can be mounted to the weapon using standard scope mounts for 30mm tubes. Ideal for professional hunters who prefer the familiar shape and function of common traditional scopes.

The Spectrum-IR digital scope has an advanced high-resolution sensor and 1024x768 OLED display – providing full-color clarity in daytime and classic black & white viewing at night.

The scope is equipped with unique dual power system. Two built-in 18650 rechargeable batteries with one CR123A replaceable Lithium battery provide up to 13 hours of continuous operation. The device has fast 64GB EMMC storage for on-board video recording and image capture. Shot Activated Recording (SAR) function allows you not to worry about having to start recording manually each time. Wi-Fi module for live video streaming and video/images recording via application are also available.

- High-definition sensor
- Supports Day/Night mode
- High-resolution OLED display
- 1x, 2x, 4x digital zoom
- On-board video and audio recording
- Shot Activated Recording (SAR)
- Wi-Fi data transmission
- Fast 64GB EMMC built-in storage
- Various reticle types and colors
- Standby mode
- Waterproof & Shockproof
- Dual power system
- Up to 13 hours continuous working
- 3-year warranty





NEITH DS DIGITAL DAY & NIGHT VISION RIFLE SCOPE

The Neith DS is a digital day & night vision scope developed for 24 hours operation in all ambient lighting conditions. This digital rifle scope has an advanced ultra-low light optical detector and 1920x1080 OLED display – providing full-color clarity in daytime and classic black & white viewing at night. The Neith supports multiple display modes including, day mode, night mode, defog mode, and more. The scope is equipped with built-in memory storage for video recording and image capture. A Wi-Fi module for live video streaming and video/ image recording via the AGM Connect application is also available.

A built-in long-range infrared illuminator provides advanced viewing capabilities and is ideally suited for operations in low-light / no-light conditions. One 18650 rechargeable battery provides long continuous operation. An external 5V power bank (battery pack) can be easily connected via a USB connector for a significant increase in operating time.

- 2560x1440 ultra-low light optical detector
- Supports Day/Night mode
- Detection range up to 400 m
- Built-in long-range IR illuminator
- On-board video recording and image capture
- Shot-Activated Recording
- 64 GB built-in EMMC memory
- Wi-Fi data transmission
- High-resolution OLED display
- Standby mode
- Replaceable and rechargeable Li-Ion battery
- External power supply capability
- Waterproof & shockproof
- 3-year warranty





NEITH DC DIGITAL DAY & NIGHT VISION CLIP-ON

The Neith DC is a digital day & night vision clip-on system that allows quick transformation of day optics into a night vision device without any special tools or equipment. This digital scope has an advanced ultra-low light optical detector and 1920x1080 OLED display – providing full-color clarity in daytime and classic black & white viewing at night. The device supports multiple display modes including, day mode, night mode, defog mode, and more. The scope is equipped with built-in memory storage for video recording and image capture. A Wi-Fi module for live video streaming and video/image recording via AGM Connect application is also available.

A built-in long-range infrared illuminator provides advanced viewing capabilities and is ideally suited for operations in low or no ambient lighting conditions. One 18650 rechargeable battery provides long continuous operation. An external 5V power bank (battery pack) can be easily connected via a USB connector for a significant increase in operating time.

- Quick conversion of daytime optics into night vision device
- Mounts in front of any daytime scope, no re-zeroing is required
- 2560x1440 ultra-low light optical detector
- Supports Day/Night mode
- Detection range up to 400 m
- Built-in long-range IR illuminator
- On-board video recording and image capture
- Shot-Activated Recording
- 64 GB built-in EMMC memory
- Wi-Fi data transmission
- High-resolution OLED display
- Standby mode
- Replaceable and rechargeable Li-Ion battery
- External power supply capability
- Waterproof & shockproof
- 3-year warranty





SPECIFICATIONS

DIGITAL DAY & NIGHT OPTICS

DIGITAL DAY & NIGHT VISION RIFLE SCOPES

	Spectrum-IR	Neith DS32-4MP
NV Technology	Digital	Digital
Lens System	50 mm; F/1.2	32 mm; F/1.2
Sensor	1920x1080 CMOS	2560x1440 CMOS
Refresh Rate	50 Hz	25 Hz
Detection Range	600 m/yd	400 m/yd
Magnification	3.5x - 14x	2.5x - 20x
Field of View	7.7° x 5.8°	8.1° x 6.1°
Weight	1.06 kg (2.3 lb)	0.46 kg (1.0 lb)
Dimensions	442 x 78 x 83 mm (17.4 x 3.1 x 3.3 in)	217 x 70 x 87 mm (8.5 x 2.7 x 3.4 in)

DIGITAL DAY & NIGHT VISION CLIP-ON

	Neith DC32-4MP
NV Technology	Digital
Lens System	32 mm; F/1.2
Sensor	2560x1440 CMOS
Refresh Rate	25 Hz
Detection Range	400 m/yd
Magnification	1x
Field of View	9.9° x 7.5°
Weight	0.46 kg (1.0 lb)
Dimensions	183 x 70 x 87 mm (7.2 x 2.7 x 3.4 in)

A man wearing a camouflage baseball cap and a black t-shirt is looking through binoculars. He is holding the binoculars with both hands. In the background, a rifle is visible, mounted on a tripod. The background is a blurred forest scene with warm, golden light filtering through the trees.

FUSION IMAGING

- MONOCULARS
- BINOCULARS



FUZION LRF FUSION THERMAL & OPTICAL DUAL-SPECTRUM MONOCULAR

The Fuzion™ LRF handheld thermal & optical dual-spectrum monocular is equipped with a 12μm high-sensitivity thermal detector, an ultra-low light optical detector, 1024×768 OLED display and eyepiece a wide FOV eyepiece. The monocular offers three different image variants: thermal, visible light, and fusion that can be easily adapted depending on different environmental conditions.

The device can quickly detect hiding objects even under extreme environments such as smoke, fog, rain, snow, etc. This high-tech monocular is equipped with a laser rangefinder for measurement of target distance. It can be widely applied to scenarios including patrol, search-and-rescue, drug enforcement etc. The waterproof housing ensures optimal performance in severe weather conditions and challenging environments.

- Dual-spectrum image fusion and object highlight
- Detail enhancement and target recognition
- Selection of thermal view channel, visible light channel, or both of them combined
- 12 μm high-sensitivity thermal detector
- Fast 50 Hz imaging
- 1x, 2x, 4x, 8x digital zoom
- Digital image processing technology
- Ultra-low illumination optical channel
- 1920×1080 optical resolution
- Built-in precision eye-safe laser rangefinder
- 1024×768 resolution, 0.39-inch OLED display
- Video recording and image capture, built-in EMMC (16 GB)
- Wi-Fi hotspot
- Standby mode
- Up to 5 hours continuous running
- Waterproof
- 5-Year Warranty





F14 FUSION I² NIGHT VISION & THERMAL TACTICAL MONOCULAR

The AGM F14 Fusion Night Vision Tactical Monocular combines I² night vision and thermal imaging technologies. The F14 dual-spectrum monocular is a device that can observe and search under extreme environments such as darkness, smoke, fog, rain, snow, etc. Due to its waterproof capability the device performs well even in severe weather conditions.

The AGM F14 can be outfitted with either a Gen 2+ or Gen 3 high-performance image intensifier tube (IIT) and 12μm high sensitivity thermal detector with 640×512 resolution. The F14 can be used as hand-held device or mounted on a helmet. The device offers different variants of image view: thermal, I² night vision, and enhanced fusion image that can be easily adapted depending on different environmental conditions. The F14 is also equipped with manual gain control, which adjusts the image brightness, providing the highest possible image quality even in changing light conditions. The monocular uses two 18650 rechargeable Lithium battery in the external holder for up to 8-hours of operating time in fusion image mode. In I² night vision mode device can run more than 60 hours.

- Dual-spectrum image fusion and object highlight
- Detail enhancement and target recognition
- Selection of thermal view, I² night vision, or both combined with multiple fusion modes
- 12μm, 640×512 high-sensitivity thermal detector
- Digital zoom in thermal channel
- Azimuth and Pitch/Inclination indication
- Brightness and contrast adjustable
- Extra-large exit pupil diameter (15mm)
- Low power consumption
- Aviation plug for external power supply and video output
- Waterproof
- 5-Year Warranty





VOYAGE FUSION THERMAL & OPTICAL DUAL-SPECTRUM BINOCULARS

The Voyage series of fusion thermal & optical dual-spectrum binoculars are equipped with a 12 μ m high-sensitivity infrared thermal sensor (NETD < 20 mK), 2560x1440 ultra-low light optical detector, 1024x768 OLED display and eyepiece with large field of view. The device can quickly discover and locate hiding objects even under extreme environments, such as smoke, fog, rain and snow. It can be widely applied to law enforcement scenarios, as well search-and-rescue, drug enforcement, anti-smuggling, hiking, and hunting.

The waterproof housing ensures optimum performance in severe weather conditions and challenging environments. The Voyage's user-friendly interface and ergonomic buttons makes adoption and application intuitive and simple. The binocular offers a variety of images including thermal, visible, fusion, and is easily adaptable to different environmental conditions.

The Voyage is equipped with all key features for target detection and positioning, including a laser rangefinder, GPS module, electronic compass, inclinometer, and 850nm IR illuminator.

This high-tech bi-ocular can take three 18650 rechargeable Lithium batteries for 8 hours of operation. An integrated proximity sensor saves energy.

- Dual-spectrum image fusion and object highlight (detail enhancement and target recognition)
- Selection of thermal view channel, visible light channel, or both them combined
- 640x512 thermal detector with NETD less than 20 mK
- 2560x1440 ultra-low light optical detector
- 1x, 2x, 4x, 8x, 16x digital zoom
- Video recording and image capture capable to search and review the event on device
- Wi-Fi hotspot
- Eye-safe laser rangefinder
- GPS module, digital magnetic compass and inclinometer
- Proximity sensor to save power
- Up to 8 hours continuous operation
- Waterproof, IP67
- 5-Year Warranty





SPECIFICATIONS FUSION IMAGING

FUSION MONOCULARS

	Fuzion LRF TM25-384	Fuzion LRF TM35-384	Fuzion LRF TM35-640	Fuzion LRF TM50-640
Detector	12µm Uncooled Microbolometer	12µm Uncooled Microbolometer	12µm Uncooled Microbolometer	12µm Uncooled Microbolometer
Resolution	384 x 288	384 x 288	640 x 512	640 x 512
Refresh Rate	50 Hz	50 Hz	50 Hz	50 Hz
Detection Range	1,250 m/yd	1,750 m/yd	1,750 m/yd	2,500 m/yd
Lens System	25 mm; F/1.0	35 mm; F/1.0	35 mm; F/1.0	50 mm; F/1.0
Magnification	2.5x - 20x	3.5x - 28x	2x - 16x	3x - 24x
Field of View	10.5° x 7.9°	7.5° x 5.7°	12.5° x 10°	8.7° x 7.0°
Digital Zoom	1x, 2x, 4x, 8x	1x, 2x, 4x, 8x	1x, 2x, 4x, 8x	1x, 2x, 4x, 8x
Optical Module	22 mm; F/1.0; 1960x1200@25fps	22 mm; F/1.0; 1960x1200@25fps	22 mm; F/1.0; 1960x1200@25fps	22 mm; F/1.0; 1960x1200@25fps
Laser Rangefinder	Up to 600 m, ±1 m	Up to 600 m, ±1 m	Up to 600 m, ±1 m	Up to 600 m, ±1 m
Weight	0.51 kg (1.12 lb)	0.52 kg (1.15 lb)	0.52 kg (1.15 lb)	0.59 kg (1.3 lb)
Dimensions	161 x 87 x 74 mm (6.3 x 3.4 x 2.9 in)	168 x 87 x 74 mm (6.6 x 3.4 x 2.9 in)	168 x 87 x 74 mm (6.6 x 3.4 x 2.9 in)	180 x 87 x 74 mm (7.1 x 3.4 x 2.9 in)

FUSION BINOCULARS

	Voyage TB50-384	Voyage TB50-640	Voyage TB75-640
Detector	12µm Uncooled Microbolometer	12µm Uncooled Microbolometer	12µm Uncooled Microbolometer
Resolution	384 x 288	640 x 512	640 x 512
Refresh Rate	25 Hz	25 Hz	25 Hz
Detection Range	2,600 m/yd	2,600 m/yd	3,600 m/yd
Lens System	50 mm; F/0.9	50 mm; F/0.9	75 mm; F/1.2
Magnification	5.5x - 88x	3.5x - 56x	5x - 80x
Field of View	5.3° x 4.0°	8.7° x 7.0°	5.9° x 4.7°
Digital Zoom	1x, 2x, 4x, 8x, 16x	1x, 2x, 4x, 8x, 16x	1x, 2x, 4x, 8x, 16x
Optical Module	31 mm; F/1.2; 2560x1440@25fps	31 mm; F/1.2; 1960x1200@25fps	31 mm; F/1.2; 1960x1200@25fps
Laser Rangefinder	Up to 1000 m, ±1 m	Up to 1000 m, ±1 m	Up to 1000 m, ±1 m
Weight	1.12 kg (2.5 lb)	1.12 kg (2.5 lb)	1.45 kg (3.2 lb)
Dimensions	217 x 155 x 88mm (8.5 x 6.1 x 3.5 in)	217 x 155 x 88mm (8.5 x 6.1 x 3.5 in)	230 x 155 x 88mm (9.0 x 6.1 x 3.5 in)

F14 TACTICAL FUSION MONOCULARS

	Thermal Module	I ² NV Module
Detector	12µm Uncooled Microbolometer	Gen 2+ or Gen 3 I ² Tube
Resolution	640x512	64 - 72 lp/mm
Video Refresh Rate	50 Hz	-
Lens System	16 mm; F/1.3	25 mm; F/1.0
Magnification	1x - 8x	1x
Field of View	25.8° x 19.1°	40°
Digital Zoom	1x, 2x, 4x, 8x	-
Weight	0.38 kg (0.84 lb)	
Dimensions	100 x 71 x 86 mm (3.9 x 2.8 x 3.4 in)	

A photograph of two soldiers in tactical gear, including helmets and vests, equipped with night vision devices. They are positioned in front of a light-colored brick wall. The soldier on the right is holding an assault rifle with a night vision scope. The image is overlaid with a red banner at the top right containing the text 'NIGHT VISION' and a list of equipment types on the right side. A solid red rectangle is located at the bottom right of the image.

NIGHT VISION

- MONOCULARS
- BINOCULARS
- RIFLE SCOPES
- CLIP-ON SYSTEMS



WOLF-14 NIGHT VISION MONOCULAR

The Wolf-14 is a durable, and versatile night vision monocular that delivers great performance at a reasonable price. Packed with high-tech features, the Wolf-14 is equally suited for law enforcement and security professionals as it is for hunting and recreation. The Wolf-14 can be hand-held or mounted on a helmet or headgear. A specialized mount enables the ability to mount in front of a camcorder or camera makes it ideal for night photography. With a variety of compatible lenses, long-range nighttime viewing is available in seconds. The Wolf-14 features bright light shut-off circuitry and a built-in spot/flood IR illuminator. The Wolf-14 can be equipped with high-performance Gen 2 image intensifier tubes in green or white phosphor.

- Available in both Green (P43) and White (P45) Gen2 configurations
- Compact, rugged design
- Head or helmet mountable for hands-free usage
- Bright light cut-off
- Ergonomic, simple, easy to operate controls
- Utilizes single CR123A lithium battery or AA Alkaline: adapter included
- Built-in Infrared illuminator
- 3-year warranty





PVS-14 NIGHT VISION MONOCULAR

The AGM PVS-14 Night Vision Monocular is a rugged, lightweight, multi-purpose night vision device that has repeatedly proven itself in combat. The PVS-14 design was originally commissioned by the United States Military to enable nighttime operations. This monocular is used globally in some of the most challenging environments. The PVS-14 can be used as a handheld device, or mounted on the included head harness. With the proper accessories, it can also be mounted to various combat helmets. The PVS-14 monocular conforms to 810G Military standards and demonstrates the highest quality form and function.

The PVS-14 monocular is a full-featured unit. Weighing less than 12.4 ounces/ 0.32 kilograms. The unit includes manual gain control, an automatic bright light shut-off feature, and a built-in Infrared (IR) illuminator. The bright light shut-off feature ensures that the high-quality photocathode tube is protected. AGM's PVS-14 includes an array of optional accessories to support virtually any operation.

- Available in both Green (P43) and White (P45) Gen2 and Gen3 configurations
- Compact, rugged design
- Waterproof
- Head or helmet-mountable for hands-free usage
- Manual gain control
- Ergonomic, simple, easy-to-operate controls
- Built-in Infrared illuminator
- 3-year warranty





WOLF-7 PRO NIGHT VISION GOGGLES

The AGM Wolf-7 PRO is a bi-ocular night vision goggle system built around high-grade Gen 2+ image intensifier tubes. They are an exceptional choice for hands-free use. Built with high-grade optics and simple, reliable electronics, the Wolf-7 PRO provides bright and clear night vision images, even in the most trying conditions. This unit includes a built-in IR light source for reading maps or basic, short-range illumination in complete darkness.

The AGM Wolf-7 PRO is available with a variety of accessories such as 3x and 5x magnification lenses for mid-to-long-range viewing, head or helmet mounts for hands-free operation, and additional, high-powered IR illuminators for long-range use.

Water-resistant, rugged, light, and compact, the Wolf-7 PRO is the perfect hands-free unit for a variety of tough operations.

- Available in both Green (P43) and White (P45) Gen2 configurations
- Lightweight compact rugged goggle system
- Multi-purpose: Hand-held, head-mounted or helmet mounted
- Comfortable flip-up headgear
- Multi-coated all-glass optics
- Wide angle infrared illuminator
- Auto brightness control
- Bright light cut-off
- Utilizes single CR123A lithium battery or AA Alkaline
- Waterproof
- 3-year warranty





PVS-7 NIGHT VISION GOGGLES

The PVS-7 is widely recognized for its unsurpassed dependability, and ergonomic design. This U.S. Military-grade night vision goggle system has repeatedly proven its worth in combat, and is the highest-quality AN/PVS-7 B/D system on the market. The PVS-7 can be outfitted with high-performance Gen 2+, or Gen 3 image intensifier tubes (available in P43 green phosphor or P45 white phosphor).

The PVS-7 is equipped with Automatic Brightness Control (ABC) to adjust image brightness in changing light conditions to maintain image definition and clarity. The built-in infrared illuminator provides a light source beyond the visible spectrum to enable the user to operate in complete darkness without being detected.

Additionally, the PVS-7 has a bright light cutoff feature to protect the image tube from sources of intense light, and a flip-up shut-off feature that can be used with the optional helmet mount system. The PVS-7 has two LED indicators in the eyepiece for the IR illuminator on and low battery indicator.

Lightweight, tough, and versatile, the PVS-7 can be handheld, or mounted to the user's head/helmet. It is compatible with afocal magnifier lenses for superior long-range viewing.

- Available in both Green (P43) and White (P45) Gen2 or Gen3 configurations
- Compact, rugged design
- Waterproof
- Head or helmet-mountable for hands-free operation
- Ergonomic, simple, easy-to-operate controls
- Built-in Infrared illuminator
- 3-year warranty





NVG-40, NVG-50 NIGHT VISION GOGGLES / BINOCULARS

The AGM NVG-40/NVG-50 is a dual-channel night vision system. The NVG is made of a compact composite housing for durability, and features advanced multi-coated optics. The device can be outfitted with either a Gen 2+ or Gen 3 high-performance image intensifier tube (IIT). The bright light cut-off feature ensures that the high-quality photocathode tube is protected. The NVG is also equipped with Manual Gain Control, which adjusts the image brightness, providing the highest possible image quality even in changing light conditions. Operating from a single AA alkaline battery or CR123A battery, the NVG can run up to 20 hours. Also equipped with an integral infrared illuminator for reading in the dark. The NVG-50 uses different optics which give it a wider 51° field of view with the tradeoff of shorter eye-relief.

- Available in both Green (P43) and White (P45) Gen2 or Gen3 configurations
- Redundant dual-tube design
- True stereoscopic vision
- Wide 51° field of view (NVG-50)
- Lightweight & compact
- Head or helmet mountable for hands-free operation
- Bright light cut-off
- Manual gain control
- Ergonomic, simple, easy to operate controls
- Built-in infrared illuminator
- Utilizes single CR123A lithium or AA battery
- 3-year warranty

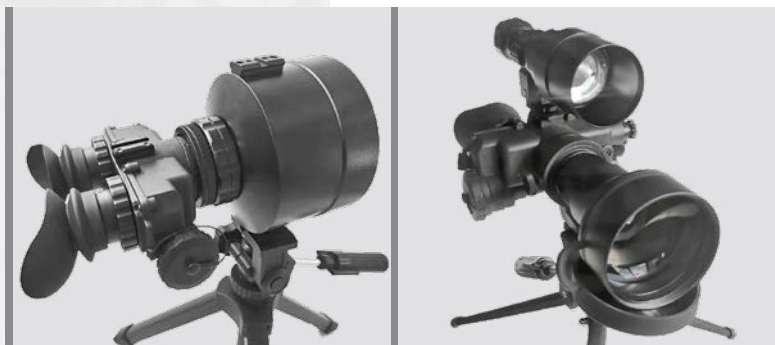




FOXBAT NIGHT VISION BI-OCULARS

The AGM FoxBat night vision bi-ocular is the perfect tool for mid-range and long-range observation. The FoxBat combines a single high quality image intensifier tube with an image beam splitter and double eyepiece, making it applicable for long viewing sessions. The FoxBat is packed with features such as digital controls, and a proximity sensor for automatic shut off in varying light conditions. This night vision bi-ocular is the ideal choice for security and recreational use.

- Available in both Green (P43) or White (P45) Gen2 configurations
- 5x or 8x magnification
- Super-fast, multi-coated, all-glass optics
- Dual eye viewing system for long viewing sessions
- Detachable long-range infrared illuminator
- Rugged and versatile design
- Water and fog resistance
- Tripod mountable
- Hand strap and neck strap for comfort of use
- 3-year warranty





WOLVERINE-4 NIGHT VISION RIFLE SCOPE

The Wolverine-4 is a rugged and advanced night vision rifle scope that offers excellent performance at a competitive price. Boasting a high-quality Gen 2+ image intensifier tube, adjustable illuminated reticle, easy-to-use internal windage and elevation adjustments, and simple controls, the Wolverine-4 allows you to see beyond the expected in nighttime conditions. This rifle scope is manufactured using a specially-coated aircraft alloy. The Wolverine-4 is fitted with a Picatinny/Weaver mount that allows for highly accurate rail positioning, ensuring user comfort. Accessory mounting rails allow easy mounting of long-range IR illuminator or other compatible accessories. The manual precision top wheel focus provides improved accuracy and ergonomics. Water-resistant, lightweight, and robust, the Wolverine-4 is the ideal night vision rifle scope for dedicated hunters and tactical marksmen.

- High-quality Green (P43) Gen 2+ image intensifier tube
- 4x magnification
- Shock resistant all-glass IR transmission multi-coated optics
- Made from aircraft aluminum alloy
- Illuminated reticle with brightness adjustment
- Utilizes single CR123A Lithium battery
- Mounts to standard weaver rails
- 3-year warranty





WOLVERINE PRO NIGHT VISION RIFLE SCOPE

The Wolverine Pro represents our newest series of military grade level Night Vision rifle scopes. The Wolverine Pro utilizes a high strength aluminum design to service the rugged day-to-day requirements and ever-changing environments. Except for the optical elements, all external surfaces utilize a non-reflective matte black finish. The external objective lens and eyepiece lens elements are protected with an ultra-durable (scratch-resistant) coating. Controls and adjustments are easy to operate and include reticle brightness, eyepiece focus, range (distance) focus, plus windage and elevation adjustments.

- Available in both Green (P43) and White (P45) Gen2 and Gen3 configurations
- 4x or 6x magnification
- Easy to operate
- Illuminated reticle with brightness adjustment
- Powered by 2 AA batteries
- Waterproof
- 40 hour continuous operation
- Quick-release mount
- 3-year warranty





COMANCHE-22 NIGHT VISION CLIP-ON SYSTEM

The AGM Comanche-22 night vision clip-on system uses the latest advances in night vision clip-on technology. Designed for mid-range nighttime shooting, the Comanche-22 delivers exceptional clarity, reliability, and versatility providing the most significant functionality and features at the lowest possible price.

The Comanche-22 is mounted to a standard Weaver or Picatinny rail in front of an existing day scope; transforming it into a night vision device with no re-zeroing required. This NVCO can be used with day scopes of up to 7x magnification for optimal performance and is equipped with a quick release mount and wireless remote control. It provides greater target acquisition, and enhanced aiming capabilities making it extremely practical and effective during the most challenging missions.

- Available in both Green (P43) or White (P45) Gen2 and Gen3 configurations
- Simple, quick conversion of daytime scopes to NVDs
- Mounts in front of any daytime scope, no re-zeroing required
- Equipped with a wireless remote control
- Powered by a single Alkaline 1.5V AA or 3V CR123A Lithium battery
- Auto brightness control
- Bright-light cut-off system
- Quick-release mount
- 3-year warranty





COMANCHE-40ER NIGHT VISION CLIP-ON SYSTEM

The Comanche-40ER Night Vision Clip-On (NVCO) system uses the latest advances in night vision clip-on technology. Designed for long-range nighttime shooting, the Comanche-40ER delivers exceptional clarity, reliability, and versatility providing the most significant functionality and features at the lowest possible price.

The Comanche-40ER is mounted to a standard Weaver or Picatinny rail in front of an existing day scope and transforming it into a night vision device with capability up to ranges of 1000 yards with no re-zeroing required. This NVCO can be used with day scopes of up to 10x magnification. Comanche-40ER is equipped with a quick release mount and remote control. It provides unmatched target acquisition and enhanced aiming capabilities, making it extremely practical and effective during the most challenging missions.

- Available in both Green (P43) or White (P45) Gen2 and Gen3 configurations
- Simple, quick conversion of daytime scopes to NVDs
- Manual gain control
- Mounts in front of any daytime scope, no re-zeroing required
- Equipped with a remote control
- Powered by a single Alkaline 1.5VAA or 3V CR123A Lithium battery
- Bright-light cut-off system
- Quick-release mount
- 3-year warranty





SPECIFICATIONS NIGHT VISION

NIGHT VISION MONOCULARS

	Wolf-14	PVS-14
NV Generation	Gen 2+	Gen 2+; Gen 3
Lens System	25 mm; F/1.2	26 mm; F/1.2
Magnification	1x	1x
Field of View	42°	40°
Weight	0.29 kg (0.64 lb)	0.32 kg (0.71 lb)
Dimensions	115 × 69 × 54 mm (4.5 × 2.7 × 2.1 in)	114 × 63 × 69 mm (4.5 × 2.5 × 2.7 in)

NIGHT VISION BINOCULARS

	FoxBat-5	FoxBat-8
NV Generation	Gen 2+	Gen 2+; Gen 3
Lens System	140 mm; F/2.0	216 mm; F/1.8
Magnification	5x	8x
Field of View	9.4°	4.5°
Weight	1.07 kg (2.35 lb)	1.76 kg (3.88 lb)
Dimensions	280 × 155 × 78 mm (11.0 × 6.1 × 3.0 in)	215 × 155 × 146 mm (8.5 × 6.1 × 5.7 in)

NIGHT VISION GOGGLES

	Wolf-7 PRO	PVS-7	NVG-40	NVG-50
NV Generation	Gen 2+	Gen 2+; Gen 3	Gen 2+; Gen 3	Gen 2+; Gen 3
Lens System	27 mm, F/1.2	27 mm; F/ 1.2	27 mm; F/1.3	19 mm; F/1.26
Magnification	1x	1x	1x	1x
Field of View	40°	40°	40°	51°
Weight	0.51 kg (1.1 lb)	0.68 kg (1.5 lb)	0.64 kg (1.42 lb)	0.61 kg (1.35 lb)
Dimensions	183 × 132 × 58 mm (7.2 × 5.2 × 2.3 in)	162 × 152 × 76 mm (6.4 × 6.0 × 3.0 in)	115 × 118 × 74 mm (4.5 × 4.6 × 2.9 in)	112 × 118 × 74 mm (4.4 × 4.6 × 2.9 in)

NIGHT VISION RIFLE SCOPES

	Wolverine-4	Wolverine Pro 4	Wolverine Pro 6
NV Generation	Gen 2+	Gen 3	Gen 3
Lens System	110 mm; F/1.5	70 mm; F/1.4	100 mm; F/1.5
Magnification	4x	4x	6x
Field of View	10°	8,3°	5,7°
Weight	1.3 kg (2.86 lb)	1.07 kg (2.35 lb)	1.47 kg (3.25 lb)
Dimensions	294 × 81 × 89 mm (11.6 × 3.2 × 3.5 in)	210 × 96 × 85 mm (8.3 × 3.8 × 3.3 in)	285 × 108 × 91 mm (11.2 × 4.3 × 3.6 in)

NIGHT VISION CLIP-ONS

	Comanche-22	Comanche-40ER
NV Generation	Gen 2+; Gen 3	Gen 2+; Gen 3
Lens System	80 mm; F/1.44	108 mm; F/1.54
Magnification	1x	1x
Field of View	12°	9°
Weight	0.75 kg (1.65 lb)	0.91 kg (2.0 lb)
Dimensions	168 × 85 × 80 mm (6.6 × 3.3 × 3.1 in)	230 × 87 × 97 mm (9.1 × 3.4 × 3.8 in)



AGM GEN 2+ AND GEN 3 I² TUBES

IMAGE INTENSIFIER TUBES

The majority of Gen 2+ and Gen 3 Image Intensifier tubes (IIT) used in AGM systems are designed as compact 18mm format, inverting or non-inverting dual proximity focused devices with high sensitivity photocathodes. AGM Global Vision offers the image intensifier tubes with a P-43 (green) or P-45 (white) phosphor screen in three performance levels. The main differences among the levels are tubes technical parameters and cosmetics.

GEN 2+ IIT

NL1 – Gen 2+ "Level 1" Photonis FOM 1400-1800 green phosphor tube (P43). NL1 is the highest performing and the cleanest Gen 2 IIT offered out of the 3 levels. There are practically no visible spots in Zone 1.

NL2 – Gen 2+ "Level 2" green phosphor tube (P43). NL2 is the second-best quality Gen 2 IIT offered, very limited number of spots in Zone 1.

NL3 – Gen 2+ "Level 3" green phosphor tube (P43). NL3 offers good quality at competitive pricing.

NW1 – Gen 2+ "Level 1" Photonis FOM 1400-1800 white phosphor tube (P45). NW1 is the highest performing and the cleanest Gen 2 IIT offered out of the 3 levels. There are practically no visible spots in Zone 1.

NW2 – Gen 2+ "Level 2" white phosphor tube (P45). NW2 is the second-best quality Gen 2 IIT offered, very limited number of spots in Zone 1.

NW3 – Gen 2+ "Level 3" white phosphor tube (P45). NW3 offers good quality at competitive pricing.

Advanced Performance Gen 2+ IIT: Highest performing and the cleanest Gen 2+ IIT offered. Made in EU.

AP – Gen 2+ Advanced Performance Auto-Gated Photonis FOM 1800-2300 green phosphor tube (P43).

APW – Gen 2+ Advanced Performance Auto-Gated Photonis FOM 1800-2300 white phosphor tube (P45).

GEN 3 IIT: All Gen 3 IIT offered by AGM are Made in USA.

3AL1 – Gen 3 "Level 1" Auto-Gated FOM 1400-1800 green phosphor tube (P43). 3AL1 is the highest performing and the cleanest Gen 3 IIT offered out of the 3 levels. There are practically no visible spots in Zone 1.

3AL2 – Gen 3 "Level 2" Auto-Gated green phosphor tube (P43). 3AL2 is the second-best quality Gen 3 IIT offered, very limited number of spots in Zone 1.

3AL3 – Gen 3 "Level 3" Auto-Gated green phosphor tube (P43). 3AL3 offers good quality at competitive pricing.

3AW1 – Gen 3 "Level 1" Auto-Gated FOM 1400-1800 white phosphor tube (P45). 3AW1 is the highest performing and the cleanest Gen 3 IIT offered out of the 3 levels. There are practically no visible spots in Zone 1.

3AW2 – Gen 3 "Level 2" Auto-Gated white phosphor tube (P45). 3AW2 is the second-best quality Gen 3 IIT offered, very limited number of spots in Zone 1.

3AW3 – Gen 3 "Level 3" Auto-Gated white phosphor tube (P45). 3AW3 offers good quality at competitive pricing.

Advanced Performance Gen 3 IIT: Highest performing and the cleanest Gen 3 IIT made by L3 and Elbit.

3AP – Gen 3 Advanced Performance FOM 2200+ Auto-Gated green phosphor tube (P43).

3APW – Gen 3 Advanced Performance FOM 2000+ Auto-Gated white phosphor tube (P45).



	GEN 2+	GEN 3
Resolution, lp/mm	45 - 72	64 - 72
Photocathode Sensitivity		
@2856°K, $\mu\text{A}/\text{lm}$	250 - 850	1500 - 2000
@880 nm mA/W	55 - 190	55 - 100
Signal-to-Noise Ratio	18 - 33	22 - 31
FOM	800 - 2300	1400 - 2200+
Halo, mm	-	> 0.85 / > 0.7
EBI, $\times 10^{-11}$ lm/cm² (max)	2.5	2.5
Luminous Gain, fL/fc		
@ 2×10^{-6} fc (min-max)	40,000 - 70,000	50,000 - 80,000
@ 2×10^{-4} fc (min-max)	10,000 - 20,000	14,000 - 21,000
Output Brightness, fL @1 and 20 fc	2.8 - 3.1	2.8 - 4.2
MTF (minimum)		
@2.5 lp/mm	92%	Info only
@7.5 lp/mm	80%	Info only
@15.0 lp/mm	61%	61%
@25.0 lp/mm	38%	38%
Reliability, Hours (min)	10,000	10,000
Photocathode Diameter, mm (min)	17.5	17.5
Power Supply	Built-in	Built-in Auto-gated/ Non-auto-gated





AGM GLOBAL VISION, LLC
173 West Main Street, PO Box 962
Springerville, AZ 85938, USA
Office: +1 (928) 333-4300
info@agmglobalvision.com
www.agmglobalvision.com

EUROPEAN OFFICE
AGM Global Vision, LTD
#6 Andrey Lyapchev Blvd
Sofia, P.C. 1756, Bulgaria
Tel: +35 (988) 560-0326
info@agmglobalvision.eu
www.agmglobalvision.eu